

# Material solutions for a new process of nutrient recovery by thermochemical treatment of sewage sludge

B. Rammer, M. Schütze  
 Email: rammer at dechema.de  
 Funded by AiF  
 Period: 01.09.2006 - 31.03.2009



## Introduction

Phosphorus is an essential plant nutrient and integral component of many fertilizers. Its natural resources are limited and a shortage is foreseeable in the next 20 years. A recently developed process [1], offers the possibility to overcome this problem by recovering Phosphorus from sewage sludge ashes in a two step process that is distinguished by the use of highly chlorine containing atmospheres at temperatures up to 1000°C.

Unfortunately, there are currently no materials commercially available that can withstand such conditions over longer periods of time.

The aim of the work is therefore to find material solutions for oxygen containing atmospheres with high chlorine contents at extremely high temperatures.

## Material Selection and Development

### Nickel base alloys

were selected as metallic base material because of their excellent high temperature corrosion resistance. To further improve these qualities, protective diffusion coatings had to be designed. The thermodynamic assessment of different coating elements revealed that aluminum and silicon have the best prerequisites to form and maintain slow growing, stable oxide layers. Consequently, Al and Si containing coatings were applied by Pack Cementation. (figure 1)

### Ceramic materials

SIC ceramics, as well as Al<sub>2</sub>O<sub>3</sub>, were chosen because of their high hardness and wear resistance combined with exceptional corrosion resistance at high temperatures.

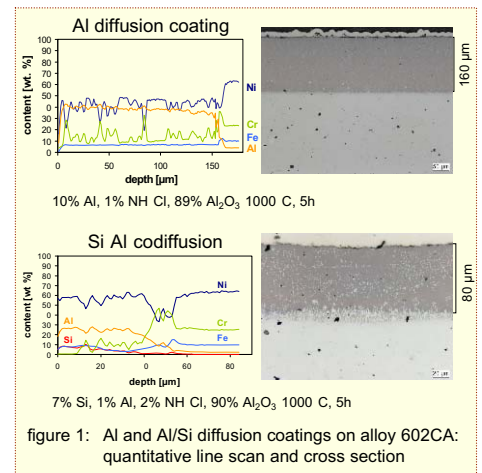


figure 1: Al and Al/Si diffusion coatings on alloy 602CA: quantitative line scan and cross section

## Corrosion Experiments

To examine the suitability of the previously chosen materials, long term chlorine corrosion experiments were conducted: They were carried out in a three zone tube furnace at 800-1000°C in synthetic air with 5 and 10% chlorine gas at a flow rate of 4-5 L/h, with the samples in close contact with sewage sludge ashes as will be employed in the industrial process (table 1).

SiO <sub>2</sub>	21,6	CaO	15,7
Al <sub>2</sub> O <sub>3</sub>	10,8	Na <sub>2</sub> O	1,04
Fe <sub>2</sub> O <sub>3</sub>	16,3	K <sub>2</sub> O	0,99
MnO	0,15	P <sub>2</sub> O <sub>5</sub>	21,3
MgO	2,85	table1: composition of sewage sludge ash [%]	

### Silicon Carbide Ceramics

Four types of SISC and NSIC ceramics were tested under high temperature oxidizing chlorine corrosion conditions. The results of the corrosion attack on an SISC sample are shown exemplarily in figure 2:

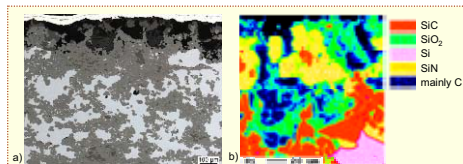


figure 2: corrosion of SISC, 10% Cl<sub>2</sub>, 1000°C, 300h  
 a) cross-section, b) elemental mapping (ESMA)

The bulk material remains mainly unaffected: It consists of SiC particles evenly distributed throughout a silicon matrix. A loss of Si near the surface can be explained by the following mechanism: During the corrosion process, Si reacts with O<sub>2</sub> to form an SiO<sub>2</sub> layer. This layer forms a eutectic with alkali and iron oxides from the ashes and hereby enables the diffusion of Cl<sub>2</sub>. Thus, Cl<sub>2</sub> can reach the pure Si inside the material and the formation of volatile SiCl<sub>4</sub> leads to degradation.

### Coated Nickel base alloys

As shown in [2], Al diffusion coatings provide good protection against chlorine corrosion at elevated temperatures. This protective effect can be confirmed for aggressive environments of up to 5% Cl<sub>2</sub> in synthetic air at 800°C (figure 3).

At this point, a thin alumina layer forms on top of the coating which protects the alloy from being corroded. Only some minor oxidation of the Cr<sub>23</sub>C<sub>6</sub> precipitates (light phase) can be observed.

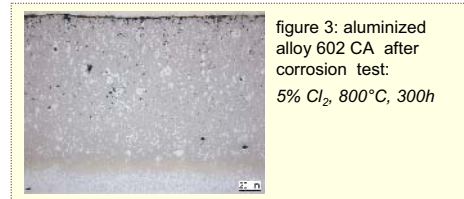


figure 3: aluminized alloy 602CA after corrosion test: 5% Cl<sub>2</sub>, 800°C, 300h

Silicon containing coatings though thermodynamically predestined to feature better corrosion protection under the chosen conditions are affected by corrosion phenomena similar to those observed in silicon carbide ceramics. The formation of the previously described eutectic combined with the emission of volatile silicon chlorides accelerates the degradation process.

Under extreme conditions (10% Cl<sub>2</sub> in synthetic air, 1000°C, 300h), the formation of a dense protective oxide layer cannot be observed any more. At this point, both types of coatings have reached their limits.

### Corundum

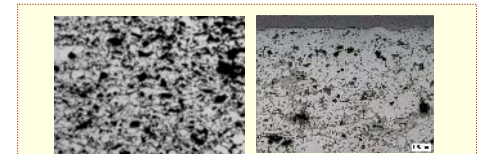


figure 4: Al<sub>2</sub>O<sub>3</sub> before (left) and after (right) corrosion test: 10% Cl<sub>2</sub>, 1000°C, 300h

The high temperature corrosion resistance of Al<sub>2</sub>O<sub>3</sub> was confirmed for oxidizing high chlorine atmospheres: No degradation of the material was detected. (figure 4)

## Summary & Outlook

The experiments show that amongst the tested materials, Al<sub>2</sub>O<sub>3</sub> is the most suitable for oxidizing high temperature chlorine corrosion conditions followed by aluminized nickel base alloys. SISC and NSIC ceramics suffer the loss of their silicon matrix and Si containing coatings are heavily attacked, too.

Al diffusion coatings have a great potential to protect nickel base alloys against chlorine corrosion at high temperatures (5% Cl<sub>2</sub>, 800°C), although they are not sufficient for extremely harsh environments like 10% Cl<sub>2</sub> at 1000°C.

Although corundum offers outstanding corrosion resistance, its mechanical properties, in particular its brittleness and low thermal shock resistance make it inapplicable as a material for large moving components like rotary furnace tubes. New material solutions have to be developed to combine the chemical resistance of corundum with the mechanical properties of a metal. Such an approach could be the application of a two layer thermal spray coating system with a ceramic top coat and a corrosion resistant metallic bond coat.

## References

- [1] Adam, C., Kley, G. and Simon, F. G., 2007, Mater. Trans., 48 (12), 3056-3061
- [2] Bender, R., 2001, Dissertation, RWTH Aachen